



# DUFRANE NUCLEAR SHIELDING, INC.

The Industrial Park ⚡ 125 Price Road ⚡ Winsted, CT 06098

Phone: (860) 379-2318 ⚡ Fax (860) 379-2325

Visit Us On The Web! [www.dufrane.com](http://www.dufrane.com) ⚡ Email: [support@dufrane.com](mailto:support@dufrane.com)

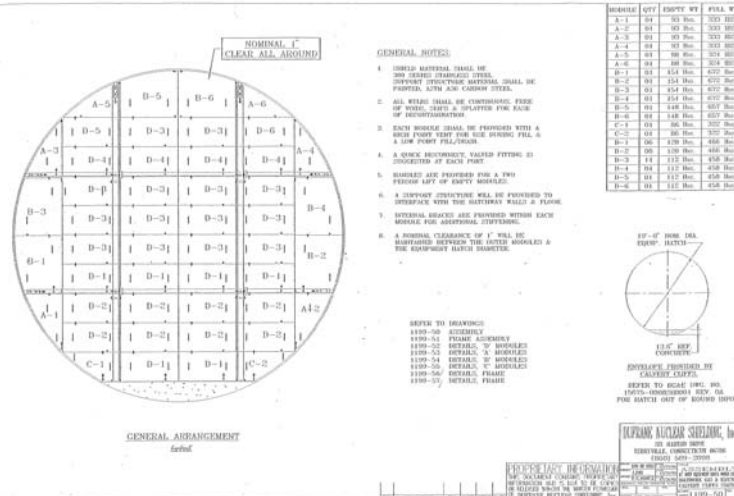
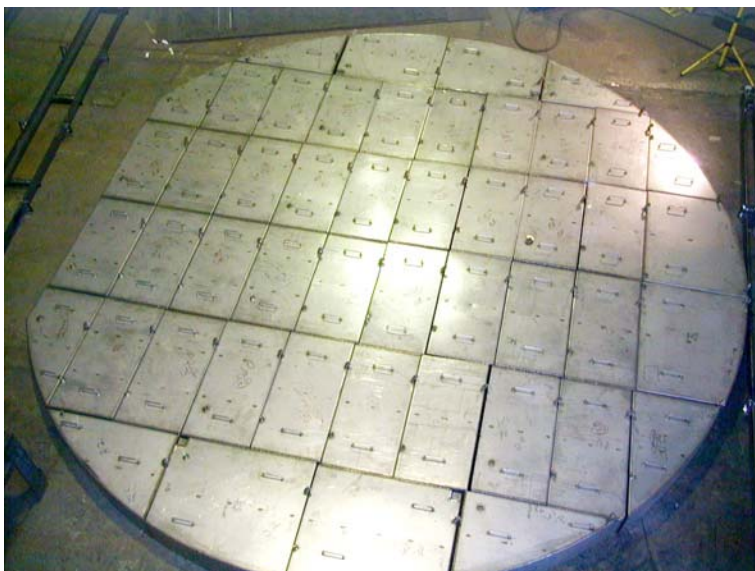
DUFRANE NUCLEAR SHIELDING DESIGN:

MODULAR/REUSABLE/COST EFFECTIVE

## EQUIPMENT HATCH WATER SHIELD

The Hatch Shield Assembly consists of multiple modules sized for handling when empty, by two people. We attempt to maximize the quantity of identical modules, depending upon the configuration of the hatch opening. A 1/2" clearance is maintained at the perimeter of the opening.

Each water shield module is constructed of 300 series stainless steel with internal bracing. A high and low point fitting provides for fill, drain and vent functions. Quick disconnect fittings with integral valves are provided. Grab handles assist site personnel during installation or removal of the empty modules.



A painted steel structure provides support of the modules within the opening. The structure is constructed of square tubing for the major framework in addition to angles to set the modules on. Jack screws are provided to secure and center the frame within the opening.

*Dufrane will work closely with you, your site ALARA Coordinator, and your engineering group to assure the best design for each application. At the time you anticipate the need for a Liner Centering Guide, please initiate a discussion with us.*

**You've Got a Problem...We've Got a Solution!**